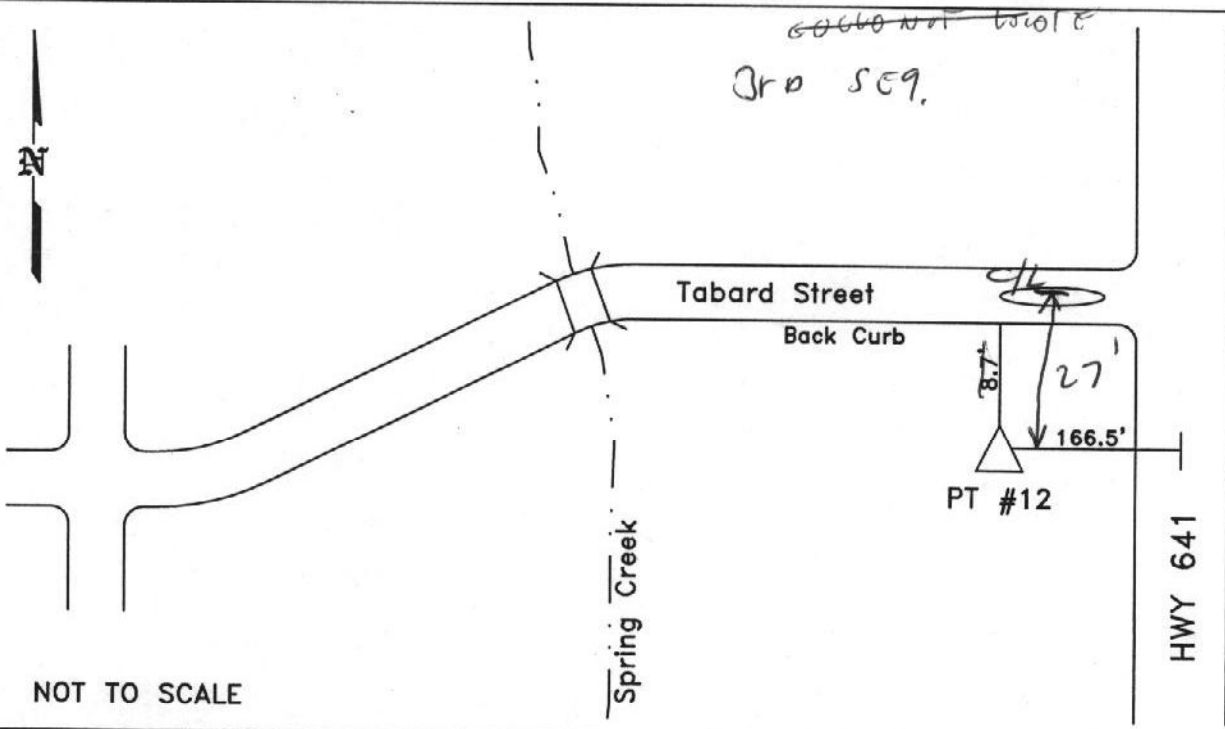


CITY OF MURRAY CONTROL MONUMENT CARD

DESIGNATION: PT #12
TYPE: CONCRETE MONUMENT W/ CITY DISK
DATE SET: JUNE 2002 QUAD: MURRAY, KY.
HORIZONTAL DATUM: NAD-83 VERTICAL DATUM: NAVD-88
STATE: KENTUCKY COUNTY: CALLOWAY ZONE: KY. S 1602

NORTHING: 1742306.83 FT
EASTING: 887198.42 FT
ELEVATION: 483.46 FT (GPS)
LATITUDE: N 36°35'06.32944" LONGITUDE: W 088°18'56.13957"
SCALE: CONVERGENCE:
PLANE AZI. TO AZI. MARK:

To Reach: Located 8.7' south of the south back of
curb of Tabard Street and 166.5' west of the centerline
of U.S. Highway 641.



NOT TO SCALE



GRW Aerial Surveys, Inc.
801 Corporate Dr. Lexington Ky. 40503
(859)223-3999